

The Soul's Entry into the World

Presentation on August 5, 2023,

By Dr. Vladimir Yatsenko

Sri Aurobindo on the Evolution of Consciousness

The “terrestrial evolutionary working of Nature has a double process:

- there is an outward visible process of physical evolution with birth as its machinery, — for each evolved form of body housing its own evolved power of consciousness is maintained and kept in continuity by heredity;
- there is, at the same time, an invisible process of soul evolution with rebirth into ascending grades of form and consciousness as its machinery.”

Sri Aurobindo on Psychic Being

- The Psychic being “is a flame born out of the Divine and, luminous inhabitant of the Ignorance, grows in it till it is able to turn it towards the Knowledge;” ... it is a deputy of the unborn Self or Atman “in the forms of Nature, the individual soul,... supporting mind, life and body, standing behind (them) ..., watching and profiting by their development and experience.”

“If it can come forward into the front and govern overtly and entirely... this outer nature of mind, life and body, then these can be cast into soul images of what is true, right and beautiful and in the end the whole nature can be turned towards the real aim of life, the supreme victory, the ascent into spiritual existence.”

The Mother on the Soul choosing its body

- ...When a soul is conscious, fully formed, and wants to incarnate, usually from its psychic plane it looks for a corresponding psychic light at a certain place upon earth.
- Besides, during its previous incarnation, before going away, before leaving the earth-atmosphere, usually as a result of the experience it had in the life that is coming to an end, **the soul chooses** more or less—not in all details but broadly—**the conditions of its future life.**
- ...thinking of a soul which would say, "No, I refuse this body, I am going to look for another"?... I don't say it is impossible—everything is possible. It does happen, in fact, that children are still-born, which means that there was no soul to incarnate in them.
- It has also happened that souls have incarnated and then left. There are many reasons why they go away. Children who die very young, after a few days or a few weeks—this may be for a similar reason.

The inherited conditions and place of birth

- “...even when it has consciously participated in the formation of the physical body, still so long as the body is formed in the usual animal way, it will have to struggle and correct all those things which come from this human animality.
- Inevitably, parents have a particular formation, they are particularly healthy or unhealthy; even taking things at their best, they have a heap of atavisms, habits, formations in the subconscious and even in the unconscious, which come from their own birth, the environment they have lived in, their own life; and even if they are remarkable people, they have a large number of things which are quite opposed to the true psychic life—even the best of them, even the most conscious.”
- If a psychic being sees from its psychic world a light on the earth, it may rush down there without knowing exactly where it is. Everything is possible. But if the psychic being is very conscious, sufficiently conscious, it will seek the light of aspiration in a precise place, because of the culture, the education it will find there. This happens much more frequently than one believes, especially in somewhat educated circles.”
- *(comp. formation of ‘culture’, through ‘religious cults and rituals’, a system of varnas and mixing of jatis in the Gita)*

The Time of Reincarnation

- For the destiny which follows after death, the last state of consciousness is usually the most important. That is, if at the moment of death one has the intense aspiration to return to continue his work, then the conditions are arranged for it to be done.
- **The more evolved the psychic is**, the nearer it is to its complete maturity, **the greater the time between the births**. There are beings who reincarnate only after a thousand years, two thousand years.
- The closer one is to the beginning of the formation, the closer are the reincarnations; and sometimes even, altogether at the lower level, when man is quite near the animal, it goes like this (*gesture*), that is, it is not unusual for people to reincarnate in the children of their children, like that, something like that, or just in the next generation. But this is always on a very primitive level of evolution, and the psychic being is not very conscious, it is in the state of formation.

Sri Aurobindo on Entry into the Body

- As regards the stage at which the soul returning for rebirth enters the new body no rule can be laid down, for the circumstances vary with the individual. Some psychic beings get into relation with the birth-environment and the parents from the time of conception and determine the preparation of the personality and future in the embryo, others join only at the time of delivery, others even later on in the life and in these cases it is some emanation of the psychic being which upholds the life.
- It should be noted that the conditions of the future birth are determined fundamentally not during the stay in the psychic world but at the time of death—the psychic being then chooses what it should work out in the next terrestrial appearance and the conditions arrange themselves accordingly.

Sri Krishna on the Soul's Intentions before departure

अन्तकाले च मामेव स्मरन्मुक्त्वा कलेवरम् ।
यः प्रयाति स मद्भावं याति नास्त्यत्र संशयः ॥

antakāle ca māmeva smaranmuktvā kalevaram |
yaḥ prayāti sa madbhāvaṁ yāti nāstyatra saṁśayaḥ | |

At the time of departure who dwells upon Me, leaving the body, he indeed goes to My Bhava, there is no doubt about it.

यं यं वापि स्मरन् भावं त्यजत्यन्ते कलेवरम् ।
तं तमेवैति कौन्तेय सदा तद्भावभावितः ॥ ८।४

yaṁ yaṁ vāpi smaran bhāvaṁ tyajatyante kalevaram |
taṁ tamevaiti kaunteya sadā tadbhāvabhāvitaḥ | | 8|4

Whatever Bhava, the state of consciousness, one dwells upon while leaving the body, to that very state one goes, O Son of Kunti, supported by it.

The Mother on the Entry into the Body

- *It is often said that children enter into possession of their psychic being when they are about seven. What does this mean exactly?*
- This is not correct. There are people whose psychic being watches over their formation before their birth, even before they are in the womb of their mother. There are children whose psychic being comes into contact with them at the very moment they utter their first cry. There are also people whose psychic being comes a few hours after their birth, or some days after, or some weeks, some months, some years after or... never!

The Triple Worlds in the Veda

THE TRIPLE WORLDS OF DIFFERENTIATION

	World	Svar, Overmind	Supermind
<i>Mental Mind</i> <i>Vital Mind</i> <i>Physical Mind</i>	Tisro Dyavah		Unity
<i>Mental Vital</i> <i>Vital Vital</i> <i>Physical Vital</i>	Trini Rajamsi	Tri Rocana	One in Many and Many in One
<i>Mental Physical</i> <i>Vital Physical</i> <i>Physical Physical</i>	Tisro Bhumih		Many

<i>Mental Physical</i> <i>Vital Physical</i> <i>Physical Physical</i>	Tisro Bhumih		Many
---	--------------	--	------

EMBRYONIC DEVELOPMENT

I TRIMESTER



1 MONTH



2 MONTH



3 MONTH

II TRIMESTER



4 MONTH



5 MONTH



6 MONTH

III TRIMESTER



7 MONTH



8 MONTH



9 MONTH

The Triple Worlds of Navagva Rishis

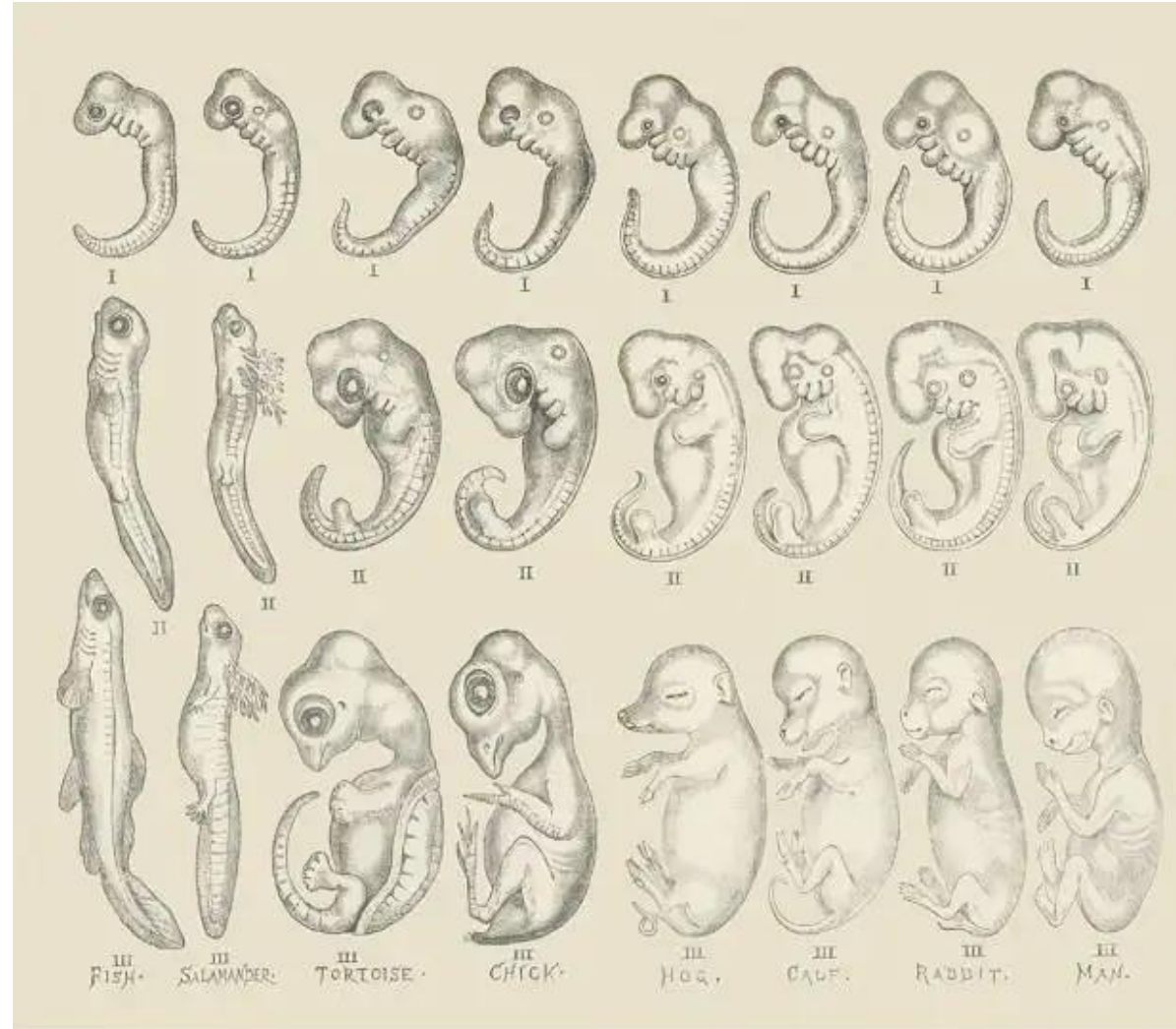
Mental Mind	Three Mental spaces	Trimester 3	Month 9
Vital Mind			Month 8
Physical Mind			Month 7
Mental Vital	Three Vital spaces	Trimester 2	Month 6
Vital Vital			Month 5
Physical Vital			Month 4
Mental Physical	Three Earths	Trimester 1	Month 3
Vital Physical			Month 2
Physical Physical			Month 1

From physical to vital and mental formation

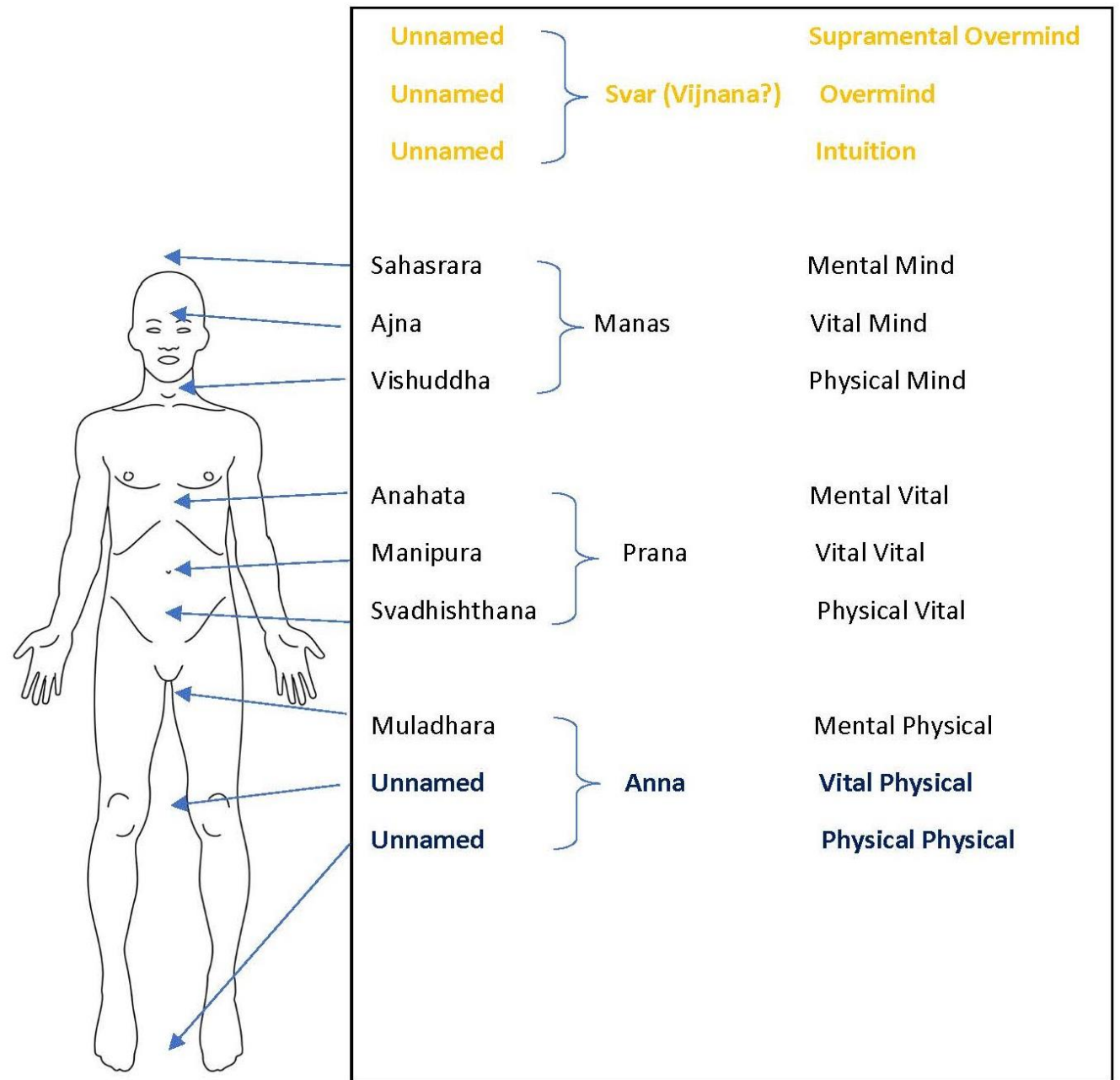
Physical

Vital

Mental



Levels of consciousness and the chakras according to the Mother



Ten Avatars of Vishnu and Evolution of Consciousness



Basic perinatal matrixes by Stanislav Grof and Ten Avatars

1) Oceanic or Interstellar Space;

First trimester: Matsya, Kurma, Varaha all water-related

2) Cosmic engulfment, the feeling of entrapment, no exit;

Second trimester: Narasimha, Vamana, Parashurama, all fighting in their new space

3) Intensification of pressure, the borderline between pain and pleasure; 'volcanic' type of ecstasy; brilliant colors, intense feelings, etc.;

Third trimester: Rama, Krishna Buddha, intensification of fierce battles

4) Enormous decompression; expansion of space, 'illuminative' type of ecstasy, radiant light and beautiful colors; feeling of rebirth etc.;

The tenth month: Kalki Avatar: Freedom, Bliss, Light